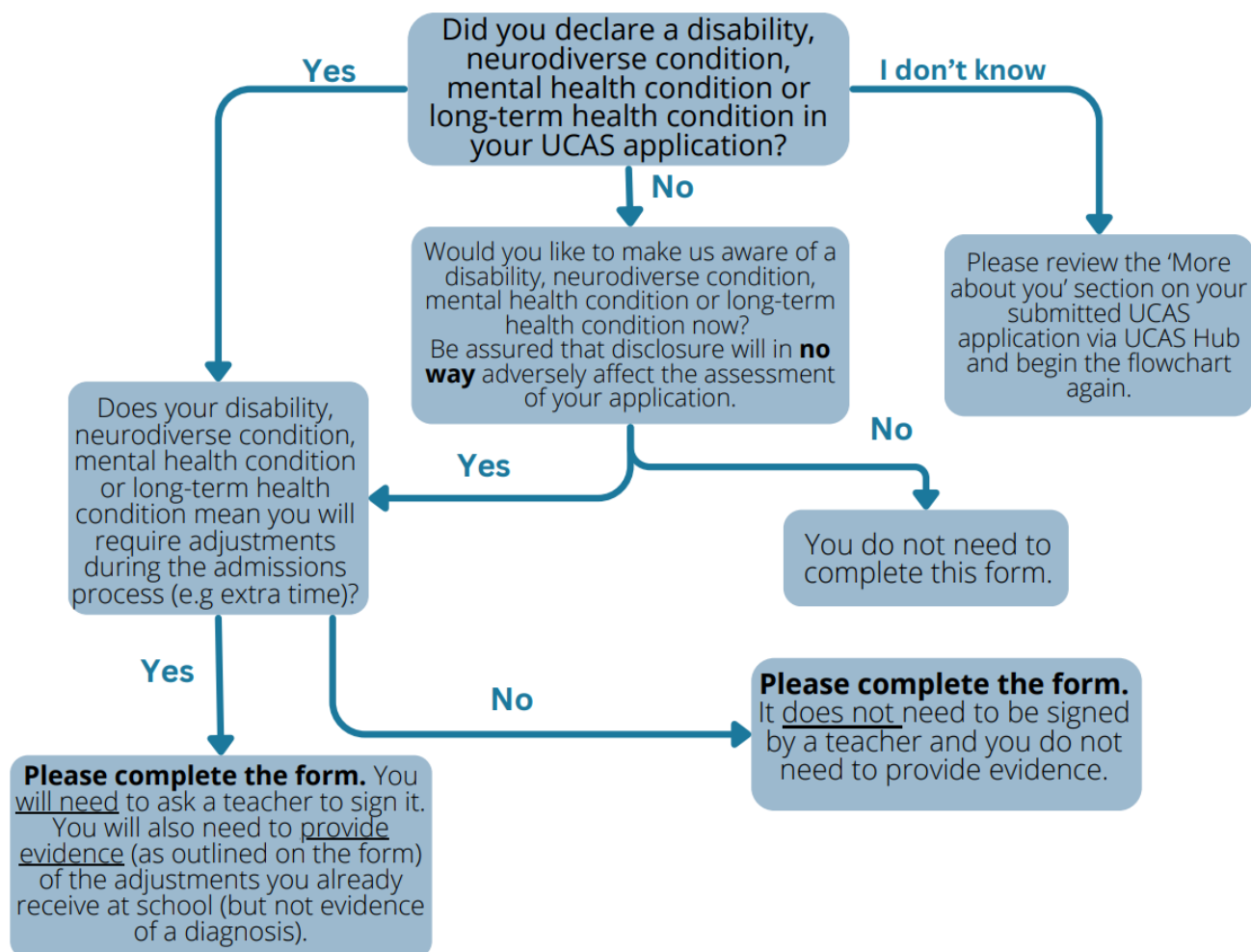


## EMMANUEL COLLEGE – ADJUSTMENTS AT INTERVIEW

### Adjustments at interview – Disability, Neurodiverse Condition & Long-term illness



If you wish to request any adjustments for a disability, neurodiverse condition and long-term illness at any interview, to which you may be invited, the relevant documentation should be submitted to the online survey (link below). You should download the 'Adjustments at Interview Form' – available from the [application acknowledgement pack website](https://cambridge.eu.qualtrics.com/jfe/form/SV_3F64DJlgJUG4Bw2) – before completing the survey:

[https://cambridge.eu.qualtrics.com/jfe/form/SV\\_3F64DJlgJUG4Bw2](https://cambridge.eu.qualtrics.com/jfe/form/SV_3F64DJlgJUG4Bw2)